

THE HOPI

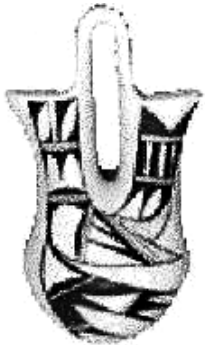
The Hopi Reservation is located 100 miles northeast of Flagstaff, Arizona.

The Hopi are descendants of the Ancient Pueblo peoples. Traditionally agricultural, they believe that all life is interrelated and respect all forms of life accordingly. They continue many aspects of their ancient culture and traditions in today's modern world. They are warm and friendly people once they come to know you and trust that you will respect their traditions.

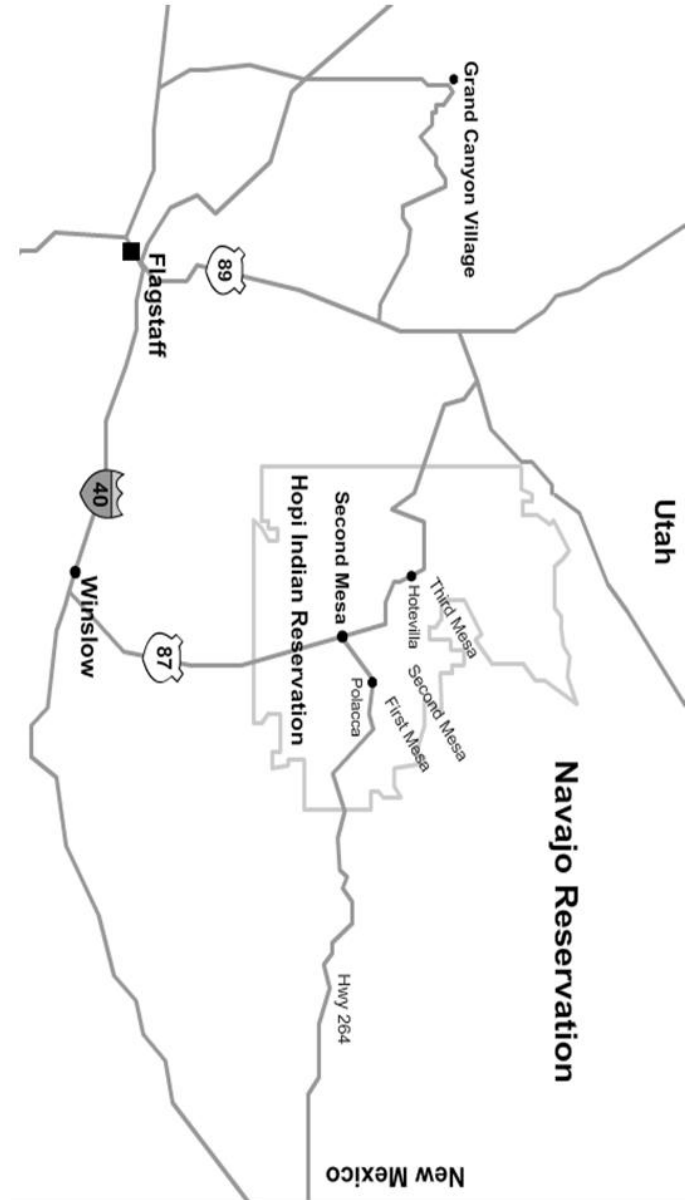
HOPI ELEMENTARY AND MIDDLE SCHOOLS

The elementary and middle schools located on the Hopi Reservation serve approximately 700 students. The school leaders and teachers are dedicated to providing the best education possible. The challenges that both the school systems and the children face are great. The current emphasis on testing at both state and national levels adds another challenge.

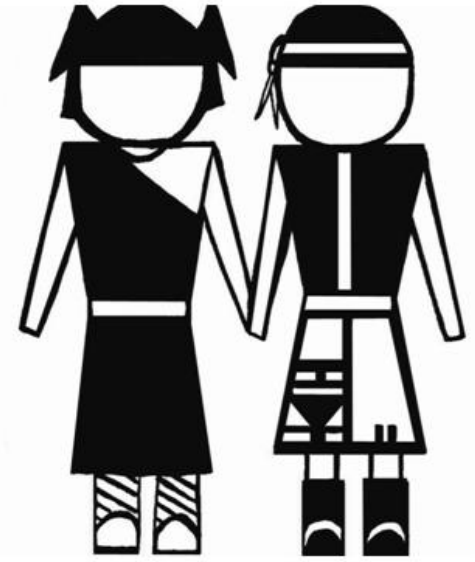
A high percentage of the children come from multi-family and /or multi-generational homes. Economic situations are often difficult.



The Friends of Hopi
Foundation
423 Territory Trail
Cedar Park, TX 78613



DO YOU
ENJOY WORKING
WITH
CHILDREN?



THE FRIENDS OF HOPI
FOUNDATION
OFFERS YOU THE
OPPORTUNITY TO
VOLUNTEER IN AN
ELEMENTARY SCHOOL
ON THE HOPI
RESERVATION

ABOUT THE FRIENDS OF HOPI FOUNDATION/EDUCATION

The Foundation was established as a tax-exempt 501(c)(3) organization to offer volunteer opportunities for those who wish to participate in educational and service programs on the reservation in the elementary schools levels K-8. (See below for Mission Statement.)

Currently, the Foundation sponsors volunteer school service programs in cooperation with the Second Mesa Day School and also the Hotevilla/Bacavi Community School on Third Mesa

WHAT CAN YOU EXPECT?

As a volunteer with The Friends of Hopi Foundation, you can expect to be assigned to a school and/or a classroom to assist in several ways.

For instance, many of us help in classrooms, doing whatever the teacher needs. You may set up bulletin boards, help an individual child, read a story, correct papers or listen to a child read.

Often we tell the children about where we live. Some of the children never go far from the reservation, and volunteers can help to be a window on the wider world. Be assured that your presence and your life experience is important to these children.

You do not have to be a teacher to be in the program. Our volunteers come from a variety of backgrounds.

For example, one of our volunteers helps with the computer program on Second Mesa. Another has helped to provide science kits for the schools and train the teachers in their use. Still another has skills in library science and has helped in the libraries of both the schools where our program is active.

WHEN and WHERE

The Hopi Schools volunteer programs are usually held in October and/or November and again in February and/or March. The website (www.hopifriendseducation.org) will post upcoming program dates as soon as they are determined.

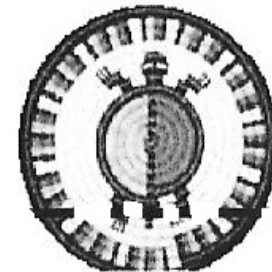
Accommodations are at the Hopi Cultural Center on Second Mesa, AZ. The HCC includes a motel, restaurant, museum and shops. (www.hopiculturalcenter.com) A gas station with a small convenience store is located six miles away.

COST will be determined per program. For past programs, the cost has run around \$700.00 per week including meals and a shared room.

The Foundation is a tax-exempt 501(c)(3) organization. Your expenses may be tax deductible

FRIENDS of HOPI FOUNDATION MISSION STATEMENT

To work in partnership with Hopi educational leaders to enhance the reservation school as well as to respond to the physical needs of Hopi by providing school supplies, educational material and clothing.



CONTACT US AT:

www.hopifriendseducation.org
and/or
The Friends of Hopi Foundation
423 Territory Trail
Cedar Park, TX 78613

Requests to be added to the Foundation newsletter mailing list may be sent to either of the above.

